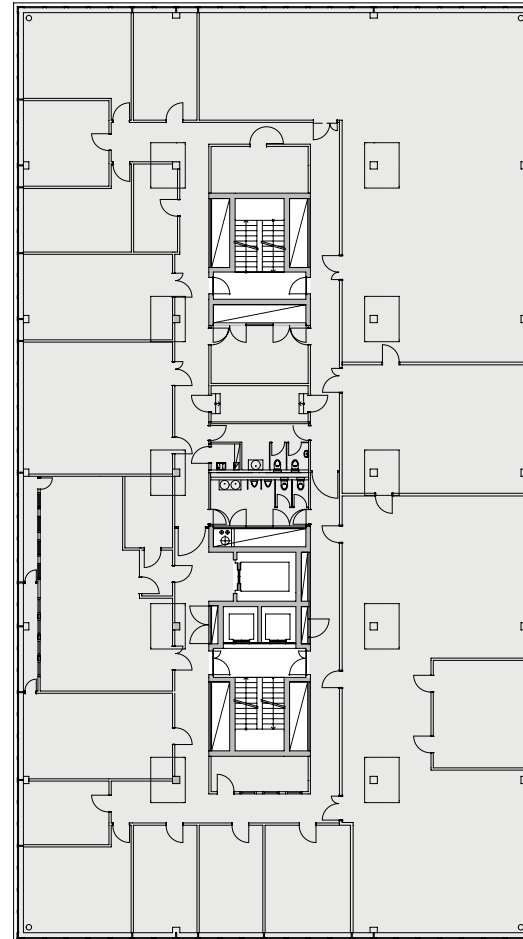
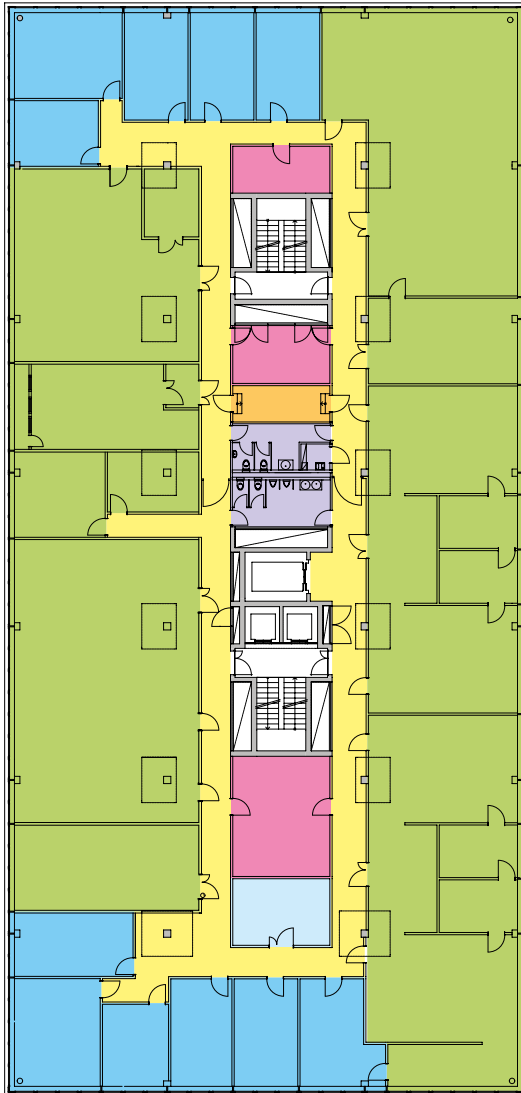
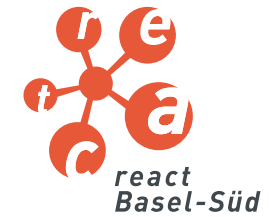


Ug Sg Eg Og¹ **Og²** Og³

2. Obergeschoss



- Ab 230 m² bis ca. 3'500 m² auf fünf Geschossen und einem Untergeschoss mit Tiefgarage
- Betriebsbereite Laborwerkplätze mit voll ausgebauter Haustechnik
- Vernünftige Mietkosten und kalkulierbare Investitionen

www.react-basel.ch

Für weitere Informationen:

smeyers AG




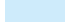



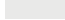
Thomas Schneeberger

Telefon +41 (0)58 322 88 61

E-Mail thomas.schneeberger@smeyers.ch

Internet www.smeyers.ch

Mietfläche

	Büro	263.00 m ²
	Labor	947.00 m ²
	Lager	69.00 m ²
	Aufenthalt	20.00 m ²
	WC, Garderoben	32.00 m ²
	Technik	11.00 m ²
	Gang	235.00 m ²
	Vermietet	

Total **1'577.00 m²**

0m 5m 10m

