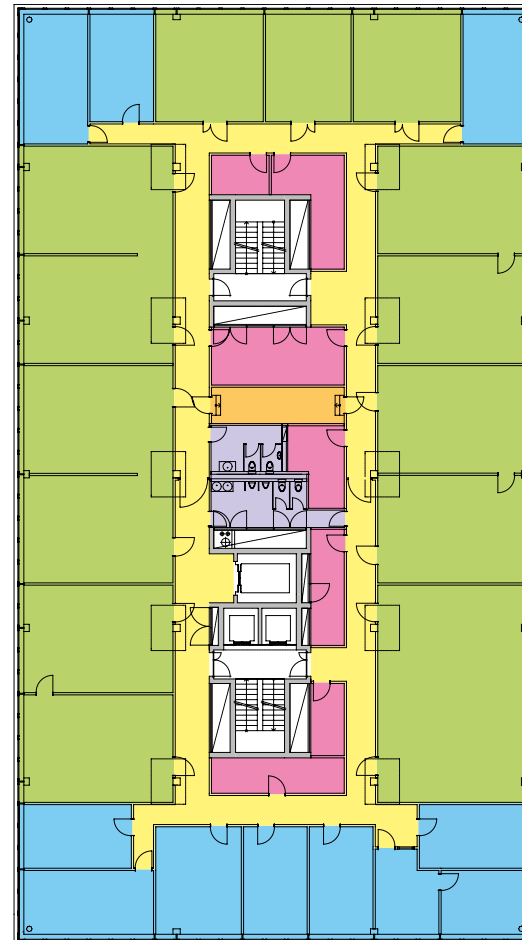
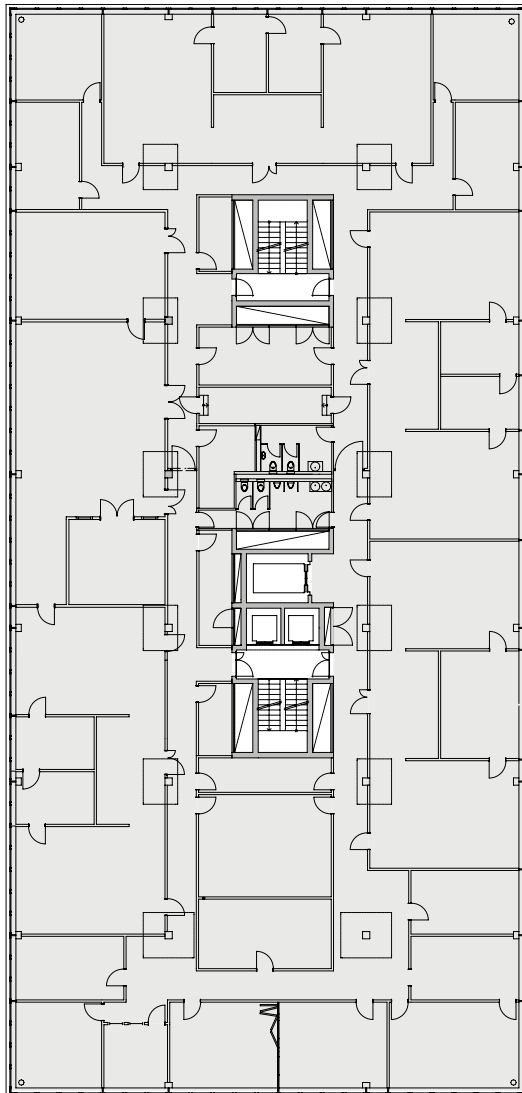
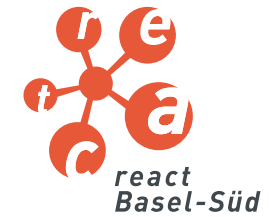


Ug Sg Eg Og<sup>1</sup> Og<sup>2</sup> **Og<sup>3</sup>**

### 3. Obergeschoss



- Ab 230 m<sup>2</sup> bis ca. 3'500 m<sup>2</sup> auf fünf Geschossen und einem Untergeschoss mit Tiefgarage
- Betriebsbereite Laborwerkplätze mit voll ausgebauter Haustechnik
- Vernünftige Mietkosten und kalkulierbare Investitionen

[www.react-basel.ch](http://www.react-basel.ch)

Für weitere Informationen:

**smeyers AG**








Thomas Schneeberger

Telefon +41 (0)58 322 88 61

E-Mail [thomas.schneeberger@smeyers.ch](mailto:thomas.schneeberger@smeyers.ch)

Internet [www.smeyers.ch](http://www.smeyers.ch)

#### Mietfläche

	Büro	261.00 m <sup>2</sup>
	Labor	729.00 m <sup>2</sup>
	Lager	97.00 m <sup>2</sup>
	WC, Garderoben	31.00 m <sup>2</sup>
	Technik	16.00 m <sup>2</sup>
	Gang	206.00 m <sup>2</sup>
	Vermietet	

**Total** 1'340.00 m<sup>2</sup>

0m 5m 10m

